



Montana

Office of Public Instruction

ESSER Guidance Sessions – December

Broadband and Educational Connectivity

Prepare, Prevent, and Respond

December 14, 2022

Speaker

Wendi Fawns, ESSER/EANS Director and OPI Broadband
wendi.fawns@mt.gov or 406-437-8595



Goals For This Session

- What is Broadband?
- Broadband challenges facing Montana
- Understand ESSER and other funding solutions
- Wrap-Up and OPI Resources
- Q&A



What is Broadband?



- An “always on” internet connection that transmits data
- Provides high-speed access with multiple technologies
 - **Fiber, Cable, DSL, Satellite, Wireless (Wi-Fi)**
- Unserved, underserved, served
 - 25Mbps download and 3Mbps upload
 - **100Mbps download and 20Mbps upload**
 - above
- Definition/standard set by FCC, Industry, best practices/practical use
- FCC Online: <https://www.fcc.gov/general/types-broadband-connections>
- Tech Guide: <https://www.techguide.com.au/news/10-things-affecting-internet-speed>



Why is Broadband important?



Montana Internet facts in 2022

- Montana has 135 internet service providers
 - Nationally 2,500+
- Montana **ranks 46th** regarding Internet coverage, speed, availability
- Montana **ranked last regarding 1G access** (only 5.8% had access)
- **9 in 10 residents** cannot purchase broadband at \$60 per month
- **8 in 10 residents** cannot purchase fiber internet
- **During COVID schools were challenged to provide remote instruction**



ESSER Funds for Broadband projects

- ESSER I (CARES)
 - 99% spent
 - Expired and No carry over
- ESSER II (CRRSA)
 - 61% spent, expires 2023
- ESSER III (ARP)
 - 22% spent, expires 2024
- Other funds for Broadband
 - ARPA, IIJA, BEAD, National Tribal \$500M+

Monthly COVID Related Funding Spent

(As Of November 2022)



Technology and Impacting Factors

- Fiber, Cable, DSL, Satellite, Wireless (Wi-Fi)
- Availability, Reliability, Cost, Speed
- Hardware, Operating System, Server, Network Traffic, Router/Modem Location, Web Browser Software
- Malware/Viruses





Challenges

- 4 lane paved road to a dirt road
- Balance feasibility – operation, fiscal, technical
- Funding
 - Similar to ESSER, head count matters
 - Determined by providers
 - Petition/challenge process and surveys used to update
- Infrastructure
 - Fiber, Satellite, Wireless (Wi-Fi) ... How data gets from point A to B
 - Access... How easy is it to use... devices at endpoint, hours of operation
 - Literacy... How knowledgeable about how to use and support, security





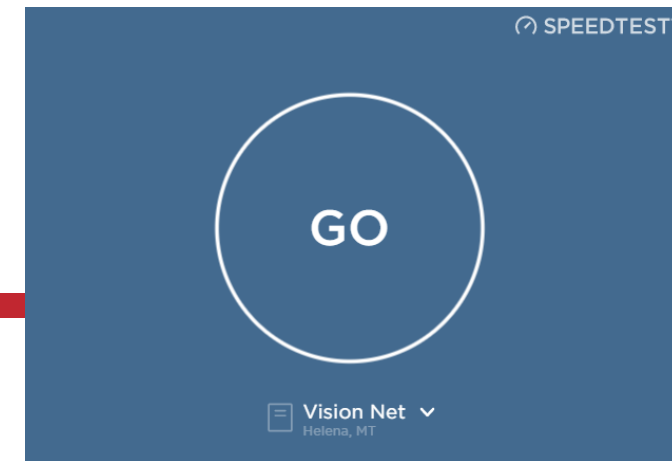
Broadband Funding Sources



- ARPA [H.R. 1319 – American Rescue Plan Act of 2021](#) (\$266M estimate set aside) provides funding to **communication providers** to improve internet
 - [ESSER Allowable use](#) (December 7, 2022)
- [FCC's Emergency Connectivity Fund](#) (ECF) helping schools and libraries provide tools and services (broadband connectivity, laptops, hotspots, modems, etc) for remote learning during COVID emergency period.
- IJA (H.R. 3684) [Infrastructure Investment and Job Act](#), *internet for all*; BEAD funds (\$380M+) provides funding to **communication providers**
- [Affordable Connectivity Program](#) provides broadband subsidies (\$30 to \$75/tribal) to eligible **families**
- [National Tribal Broadband](#) Grant (NTBG) with [Tribal Broadband Connectivity Program](#) (\$127M estimate)

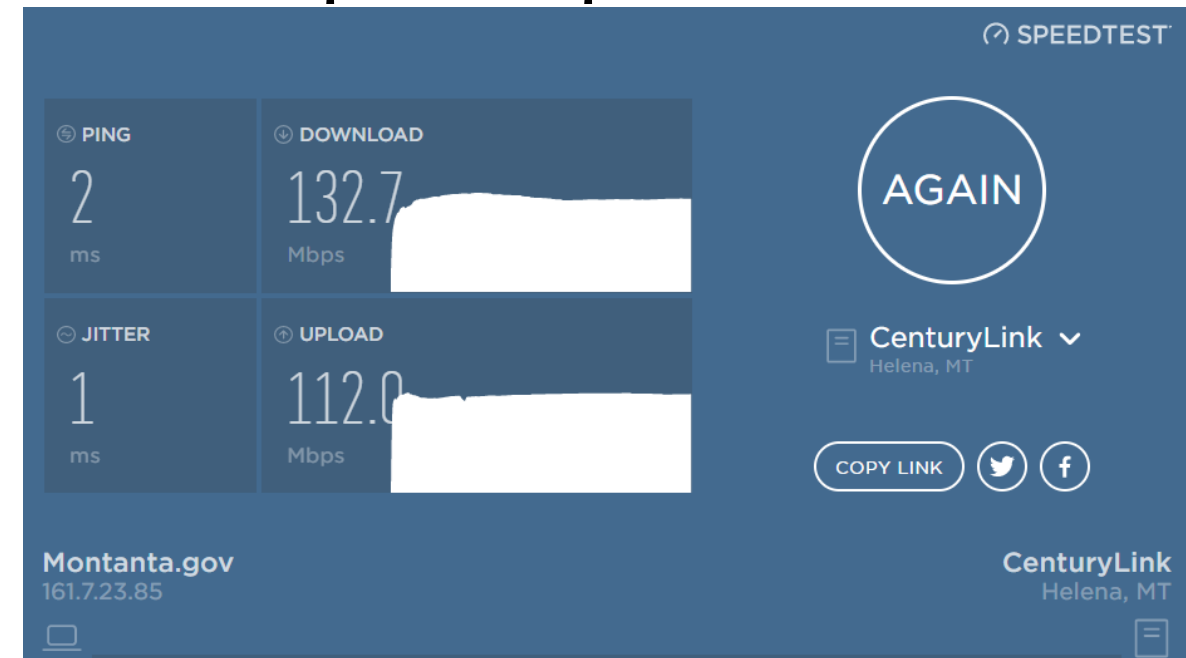


Next Steps



Test your internet speed at <https://connectmt.speedtestcustom.com/>

- You must press the “GO” button
- The SpeedTest website will run download/upload speed tests and display your results.
- Ask OPI for assistance
- Engage your community



- Where do we want Broadband to be in 2 years?
- What challenges have you encountered (past or present) with your internet or technology setup?
- Do you have a dedicated I.T. person at your location who can help with technical challenges?

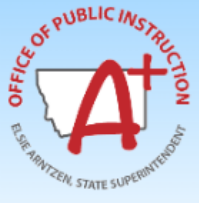




Resources at OPI.MT.GOV

P.O. Box 202501 • Helena, MT 59620-2501

[Calendar](#) [About Us](#)



PUTTING MONTANA STUDENTS FIRST



Search...

[Families & Students](#)

[Educators](#)

[Leadership](#)

[Contact](#)

[Safety & Student Support](#)

Montana Office of Public Instruction

Welcome to the Office of Public Instruction

Superintendent Elsie Arntzen is proud to serve our Montana families, students, and teachers. **Families are the foundation of learning as our parents are our first teachers.** Our students are our most precious resource and the future of this great state. As a teacher of 23 years, the Superintendent knows the importance of quality educators in the classroom and is working to ensure Montana teachers have the flexibility needed to put our Montana students first.

The Montana Office of Public Instruction (OPI) is charged with the responsibility of providing technical assistance in:

- School Finance
- School Law
- Teacher Certification and Licensing
- School Accreditation
- Teaching and Learning Standards

The OPI staff administer a number of federally funded programs and provide a variety of information services, including the information systems necessary to assess student achievement and the quality of Montana's elementary and secondary school systems.

[OFFICE OF THE SUPERINTENDENT](#)

[MEET EXECUTIVE STAFF](#)

[WATCH THE 2022 FALL SCHOOL LAW CONFERENCE](#)

[2021-2022 SUMMATIVE ASSESSMENT SCORES](#)

[2023 TEACHER OF THE YEAR](#)

[OPI ORGANIZATIONAL CHART](#)

[SEE OPI PRESS RELEASES](#)

[ESSER](#)

[EANS](#)

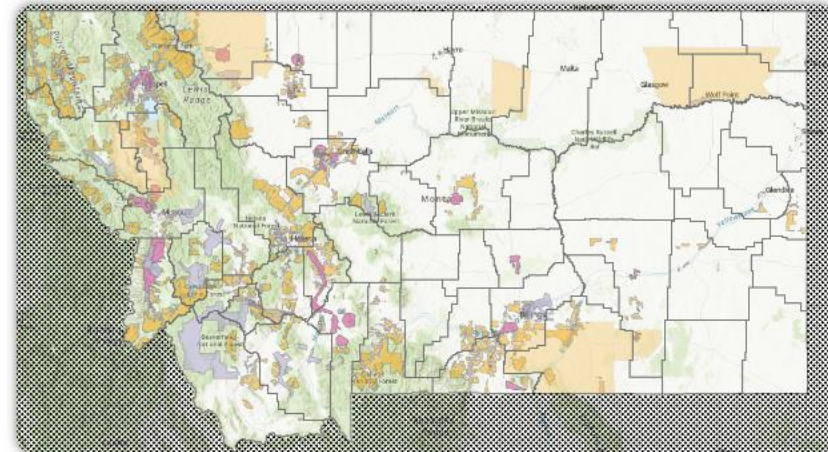
[BROADBAND](#)

Broadband

Help Close the Digital Education Divide in Montana

Broadband in Montana

Click on the map for more details on Broadband availability in Montana



[SURVEY FOR SCHOOLS](#)

[SURVEY FOR RESIDENTS](#)

[CHECK YOUR INTERNET SPEED HERE!](#)



Office Hours December 15 & 16

- We are hosting Open Office Hours this week!
 - Thursday, December 15th
 - Friday, December 16th
 - 10am – 4pm each day
- Register at: <https://forms.gle/BC1BsUHBq2SKSWom6>
 - After registering, you will receive a Zoom link for your Office Hours.
 - When you join the Zoom meeting, you will be placed in a waiting room. Please be patient until we can let you in.
- We look forward to meeting with you!

Q & A

Feel free to ask questions!

Wendi Fawns, ESSER/EANS Director and OPI Broadband
wendi.fawns@mt.gov or 406-437-8595